



THE Marquee

From the Desk of Vonnie Corsini, Executive Director

May 2020 / ISSUE FOUR / VOL 2

I hope THE MARQUEE finds you and yours doing well. The last six weeks have been different (yes, that is an understatement). Like you, we have been adjusting schedules, working from home and keeping our social and physical distance. As strange as it might sound, COVID-19 has not changed our daily schedule in terms of the planning, funding applications and other activities of the Colonial Fox Theatre Foundation. We continue with our work, including understanding IRS changes to charitable giving.

If you did not already know, the Cares Act passed by Congress at the end of March provides you with a “top of the line \$300 charitable donation.” That is IRS language to say that even if you don’t itemize and take the standard deduction for 2020, you can still donate up to \$300 and deduct it. You will need your cancelled checks for donations of less than \$250 or a charitable receipt from the nonprofit for any gift of \$250 or more. In addition, larger donations can be deducted at a faster rate for 2020. I won’t go into all of those details in this memo. However, you may want to visit with your accountant if you are making large gifts.

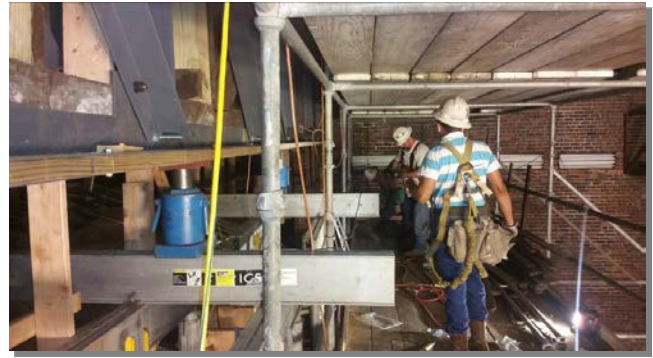


It all began with the roof! The State Historic Tax Credit reimbursement application that I just finished submitting gave me a chance to relive our decade-long historic restoration journey. I have been reminded with awe of the many projects and the generous people who have gotten us to where we are today. Sharing this story, and others, is one of the reasons for THE MARQUEE. Our story started with

the “abatement of water” and that started with the roof. The first thing we did to keep water out and to save this Theatre was repair the roof. Over the 40 years of neglect, a damaged roof allowed a large amount of rain into the theatre and it created havoc. Historically, black tar was used to seal this roof. The Colonial Fox had multiple upon multiple layers applied, one over the other. Besides allowing water to come into the theatre, the weight on the roof was creating damage. Mid-America Roofing removed the roof and replaced it with a much superior membrane roofing system. The white roof is beautiful and energy efficient . . . and, most importantly, the interior has remained dry!

The Colonial Fox Theatre proscenium

arch is the same iconic architectural feature that you would see in many theatres. These prosceniums were intended to act as huge megaphones directing the sound to the audience. Our theatre was also designed with “pin-drop acoustics,” meaning even the sound of a pin dropping on stage could carry through the auditorium. These features, however, were covered up in the



1940s to when a larger movie screen was framed in. No one had seen the beautiful, original proscenium arch since that time. It was hidden and forgotten until a group of our volunteers set about to reveal it. We discovered that after all of those years of rain leaking through the roof, the arch had some serious structural issues. Eby Construction, a historic specialist company, was hired to fix the issues. They jacked up the proscenium arch and installed steel trusses on either side to secure it and hold it level. The process was amazing and a wonder to witness.

Covid-19 has revealed the adaptability and creativity of our local businesses. For some, like **Toast, Signet Roasters, Jolly Fox, Drop the H, The Pitt, Root, Brick + Mortar, and Chatters**, social distancing has taken the form of a sidewalk tables, take-out orders, curbside pickups, time-slot reservations, and delivery of special meals to front-line healthcare workers. For others, like **Audacious, Embellish and Miners & Monroe**, on-line shopping and e-cards are options. Let’s get behind all of these local businesses and help as much as we can. A complete list of restuarants providing curbside, carry out and delivery is provided by the Pittsburg Chamber of Commerce. Go to: pittsburgareachamber.com/coronavirus.



All of these local businesses, and many more

including retail and professional services support our schools, university, special events and more during normal times. We encourage you to remember them during this time and shop Pittsburg first whenever you can. We get through this together!

QUESTIONS?

Please call us at (620) 235-0622 or e-mail us at info@colonialfox.org

Our website – www.colonialfox.org Our address - P.O. Box 33 / Pittsburg, KS 66762

The MARQUEE is provided to individuals and businesses who help advance the cause of philanthropy through the renovation and operation of the Colonial Fox Theatre.